

## Instructions: Create a transect on your phone while counting lights

- Before you start: look at the transects that have been created in other cities, to get an idea of how we organize the counting. In several years, you or another person might want to count lights on the same street, so it's important that the transects are easy to understand, well organized, and not too long.
- Go outside to the location where you want to create and survey your transect.
- **IMPORTANT:** To protect the privacy of individuals, we have a rule that transects must contain either zero or at least four households.
- If your location is not already shown by the blue dot, click the "location button".



- Click the yellow "+ button", and then "Define an entirely new transect".



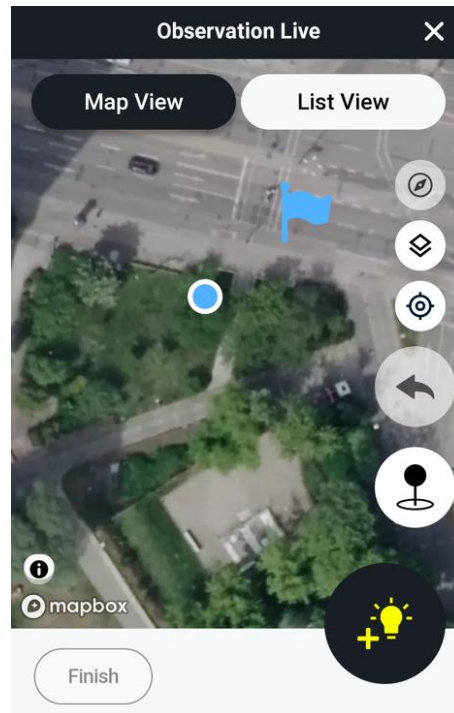
- The first step is to answer a question about the amount of people that you can see on the transect when you are standing at the starting position. Use the slider to set the number of people, then click "Start" to continue.

Standing at the start position, how many people can you see on the transect? \*

Use the slider to select a value

- Once you click "Start", the app will add a blue flag at your starting location.

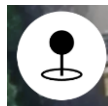
The Nightlights Project: We count lights, because the night counts!



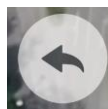
- **IMPORTANT:** Make sure the flag is in the correct location! You can do this by dragging the flag. Place it in a position that will be easy for our analysis team and future light counters to understand.
- Use the “add light button” (bottom right) to add the first light source you see.



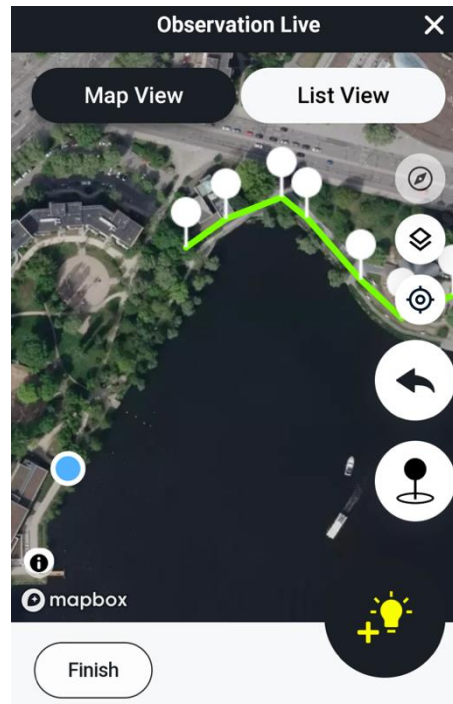
- If you come to a bend in the road, use the “pin button” to mark your path. Alternatively, you can tap on the map to add a point.



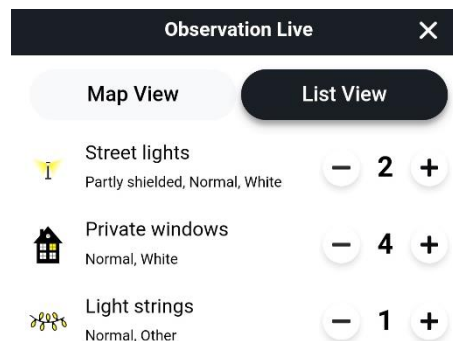
- If you placed a pin and then realize that it is in the wrong location, you can use the “undo button” to remove the last pin. You can also drag pins to different locations.



The Nightlights Project: We count lights, because the night counts!

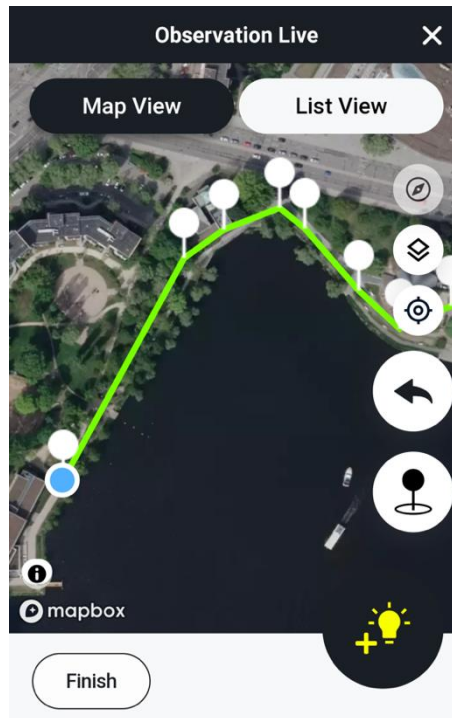


- Walk along your transect, adding lights as you go. If you switch from “Map View” to “List View”, you can easily add or subtract lights of the same categories you have already counted using the plus and minus buttons.



- **IMPORTANT:** When you reach the end of your transect, do not forget to add a final pin! Otherwise, the transect will end at the last point you added a pin, not at your current location shown by the blue dot (see the map above).

The Nightlights Project: We count lights, because the night counts!



- Once you have counted all the lights, click the “Finish” button (at bottom left).
- Answer a set of additional questions about the street.

- All of the sliders must be set, and all of the questions must be answered, with the exception of the question regarding your thoughts about safety, which is optional.

The Nightlights Project: We count lights, because the night counts!

How lively was the street?\*

Now a quick question regarding crime. How safe would you feel if you were to walk alone on this street at this time?

Comments (Optional)

**Survey Partner**  
Did you do this survey with another user?

Select Partner

No observations recorded

SUBMIT

- Then submit the survey. When you have enabled practice mode submission under "Account" settings, you have the option to submit the survey as a test.
- Your new transect and data should now be shown within the app.

